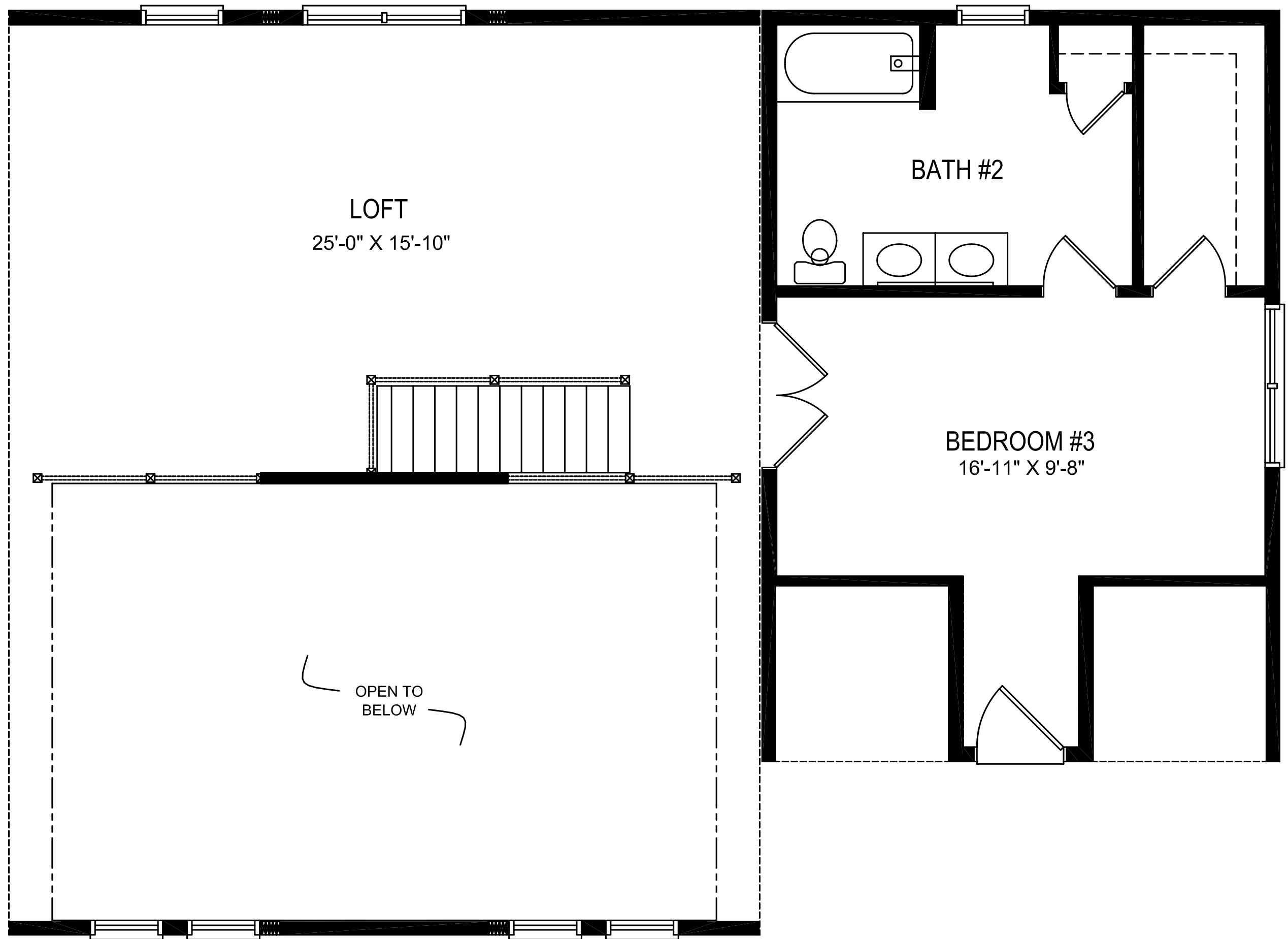


Erie
44' X 32'



LOFT
25'-0" X 15'-10"

BATH #2

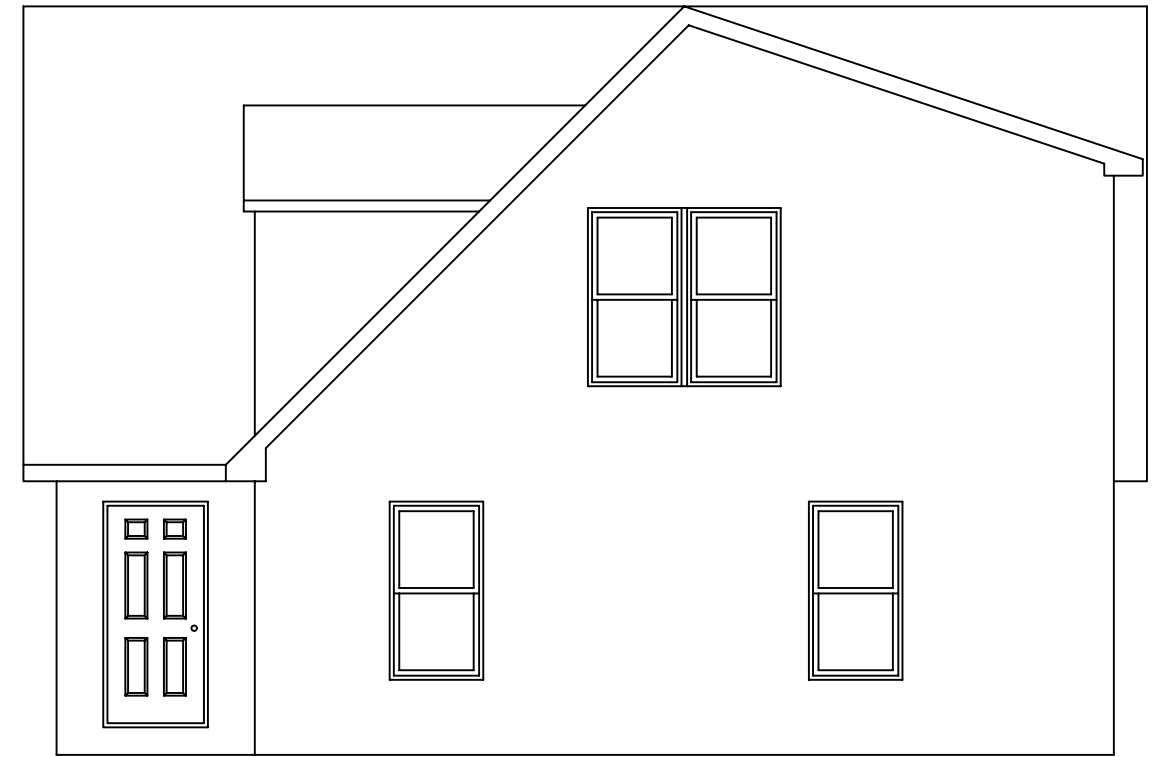
BEDROOM #3
16'-11" X 9'-8"

OPEN TO
BELOW

Erie
44' X 32'



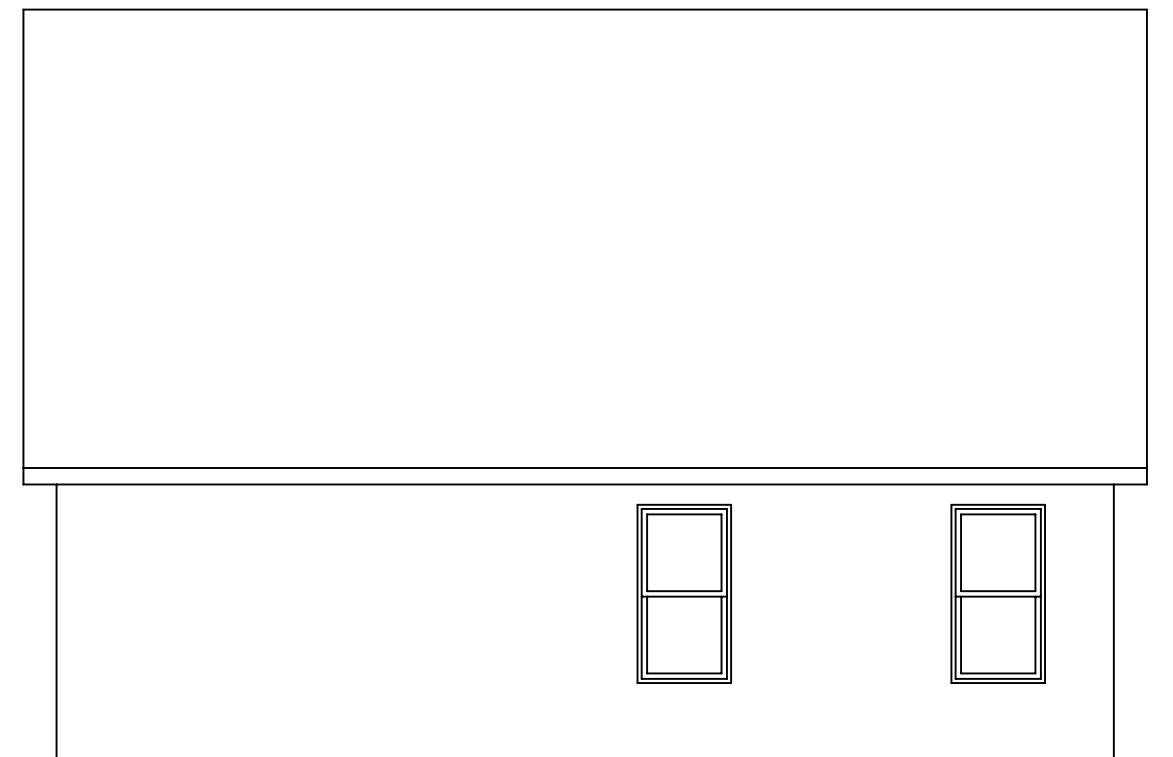
FRONT ELEVATION



RIGHT SIDE ELEVATION



REAR ELEVATION



LEFT SIDE ELEVATION

Standard Modular Log Home Specifications

***Please Note: New England Cedar Homes reserves the right to change or discontinue specifications, materials, and/or prices without cause or notice.**

Floors

- Double 2x12 perimeter band, double 2x12 SYP girder with ½" sheathing insert under marriage walls, 2x12 floor joists @ 16" O.C. with joist hangers at marriage walls
- ¾" T & G Plywood glued and nailed

Walls

- 2x6 exterior wall construction, 16" O.C.
- 7/16" O.S.B. exterior wall sheathing
- R-19 Fiberglass Insulation with vapor barrier
- ½" Finished drywall with two coats base paint
- Thermoply sheathing board on marriage walls

Roof and Ceiling

- 23'8" Wide Models: 10" Fixed eave overhang with 6" fascia
- 27'6", 29'6", 31'6" Wide Models: 10" Hinged eave overhang with 6" fascia
- 12" Gable end overhangs
- 6/12 Trussed roof @ 16" O.C.
- 7/16" O.S.B. Roof sheathing
- 3' Ice & Water barrier
- Shingle over ridge vent
- 30 year Architectural self-sealing shingles with #15 felt-paper
- 8' Ceiling height
- R-30 Fiberglass insulation (kraft-faced)
- 5/8" drywall ceiling, taped and spackled with a flat finish

Interior

- • All interior walls at 16" O.C.
- • FHA approved carpet with 6 lb bonded padding in Living Room, Dining Room, Hall and all Bedrooms. (shipped loose, cut and labeled per room)
- • Vinyl floor covering in Kitchen, Baths and Utility Room
- • Ventilated closet shelves
- • 6-Panel Masonite white or stained passage and bi-fold interior doors
- • Wood baseboard molding (3 ¼") - white or stained pine
- • Wood door and window Colonial style casing (2 ¼") white or stained pine
- • Hall light and globe

Exterior

- • Andersen Tilt-wash 400 Series windows with screens and insulated Low "E" glass, stained or white interior
- • Fiberglass front and rear doors
- • Exterior porch light at front and rear doors
- • .044 Gauge, 4/4 or German Lap Vinyl Siding
- • Door bell front and rear

Kitchen

- • Vented range hood with light and fan (ductless-type hood if range is on interior wall)
- • 8" deep, double-bowl stainless steel sink with single lever faucet assembly and spray
- • Custom built kitchen cabinets, raised panel oak with "dovetail", full-access drawers
- • High pressure laminate countertops with backsplash
- • Soffit, Galley Rail or Crown Molding over kitchen cabinets
- • Ceiling lights centered in Kitchen and above sink
- • Chandelier in Dining Room

Bathroom

- • Custom built vanity cabinet with cultured marble top with single bowl lavatory
- • One piece fiberglass tub & shower unit
- • Bath vent fan with light in all baths (Master bath to receive vent fan with light and heater on separate switch)
- • 1.6 Gallon flush colored china pottery water closet (elongated)
- • Towel bar and paper holder
- • Recessed beveled mirrored cabinet with matching light
- • Vanities 42" and over will have plate glass mirrors with light bar

Plumbing

- • All plumbing stubbed through floor for on-site connection
- • Water lines – PEX Tube supply lines
- • Waste and vent lines – PVC schedule 40
- • One frost-free exterior water faucet (shipped loose)

Electric

- • 200 AMP 40 circuit box (dropped below floor on basement models)
- • Smoke detectors – Smoke and heat detectors for Massachusetts only
- • Exterior weatherproof receptacle on Ground Fault Interrupter circuit
- • Silent-Touch designer wall switches
- • GFI protection where required

Heating

- • Electric baseboard heat with individual wall-mounted thermostats
- • 50 Gallon electric water heater

Finish

- • White pine log siding with solid log corner extensions on exterior walls
- • 6/4 x 4 unfinished white pine exterior trim around all windows and doors
- • Solid six panel pine interior doors
- • Solid six panel pine bi-fold closet doors
- • 1x4 white pine interior door and window trim – Clear Polyurethane finish
- • Vinyl clad taupe or sandalwood D/H – Low “E” windows w/screens
- • 1x8 T & G white pine on the interior of all exterior walls – Clear Polyurethane finish

Special Note: Log Homes Require Preservative Be Applied Immediately Following The Home Being Placed On The Foundation. Complete On-Site By Others